



Email Client Configuration for Sabah Government Users

MAC Devices

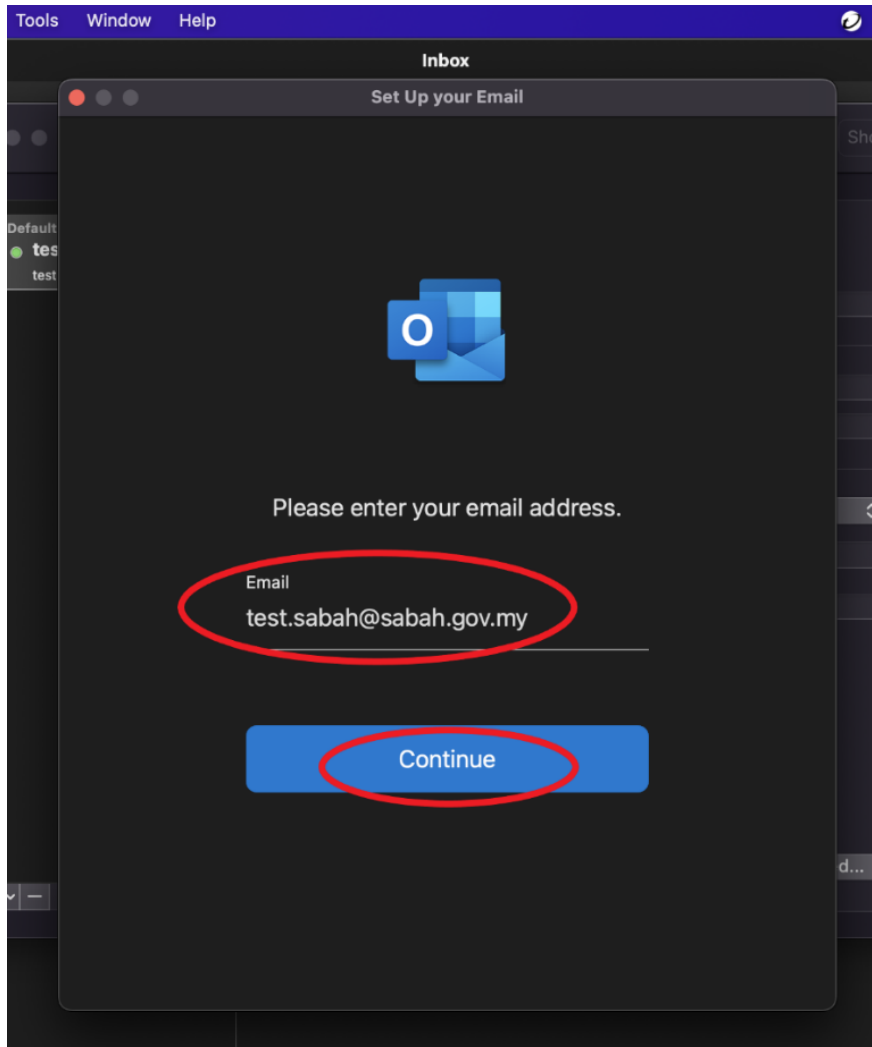
2023

Table of Contents

Exchange	3
POP3 and IMAP Configuration.....	6

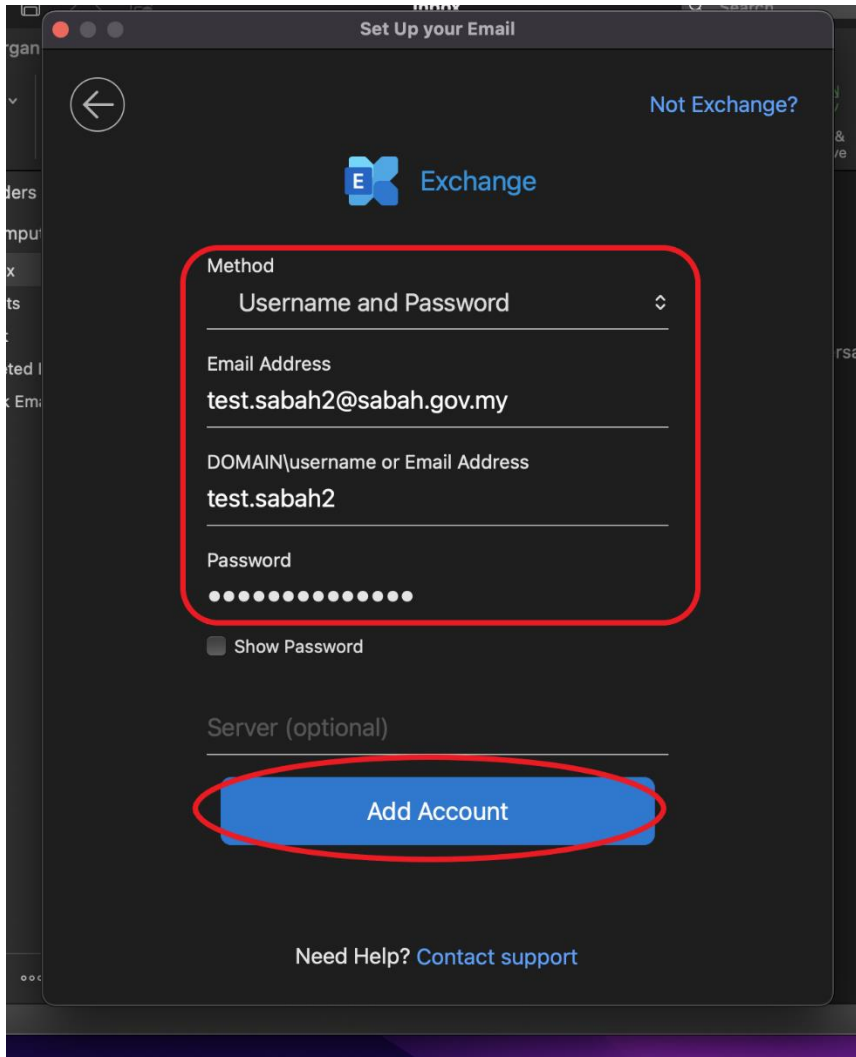
Exchange

- 1) Start from the Set Up your Email step. Type in your Sabah Gov email and click **Continue** and wait.

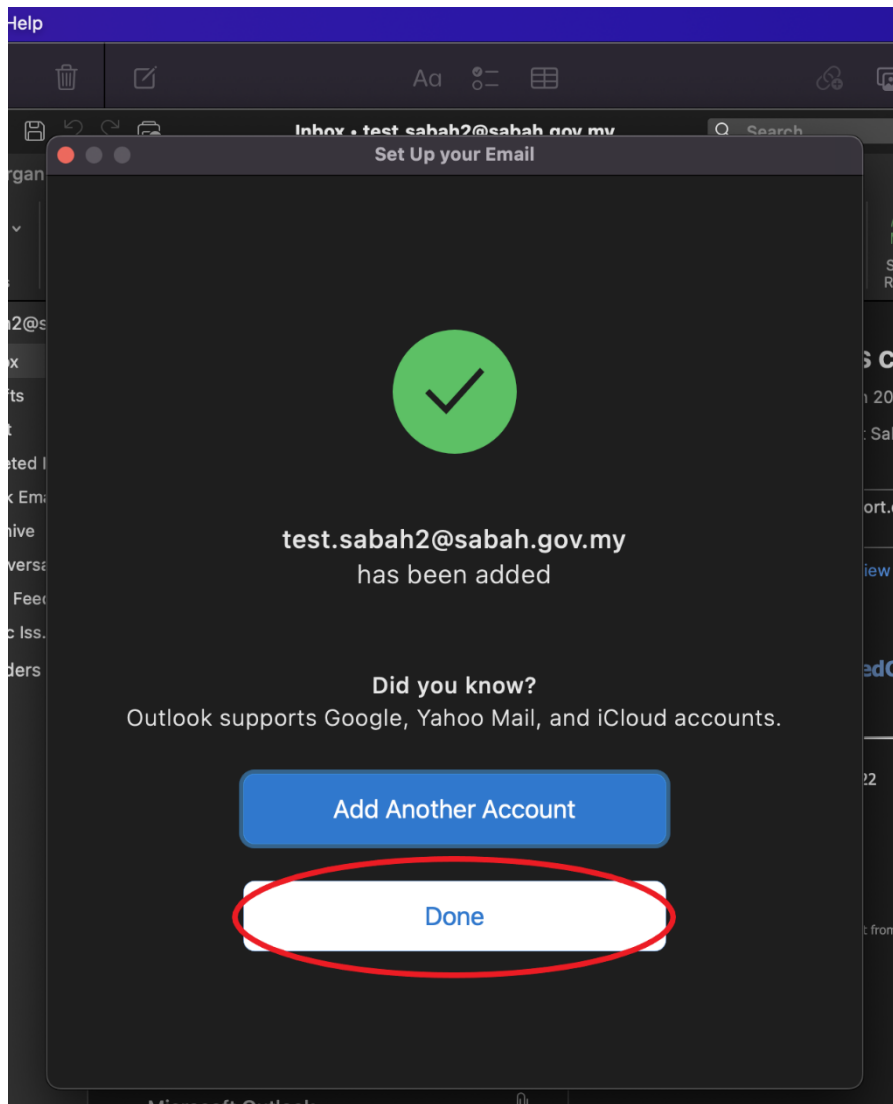


- 2) On this page,
Select **Username and Password** authentication method.
Type in your Sabah Gov email address (eg: Michael@sabah.gov.my)
Type in your user ID (the front part of your email before “@”. eg: Michael)
Type in your email password.

Press **Add Account**.

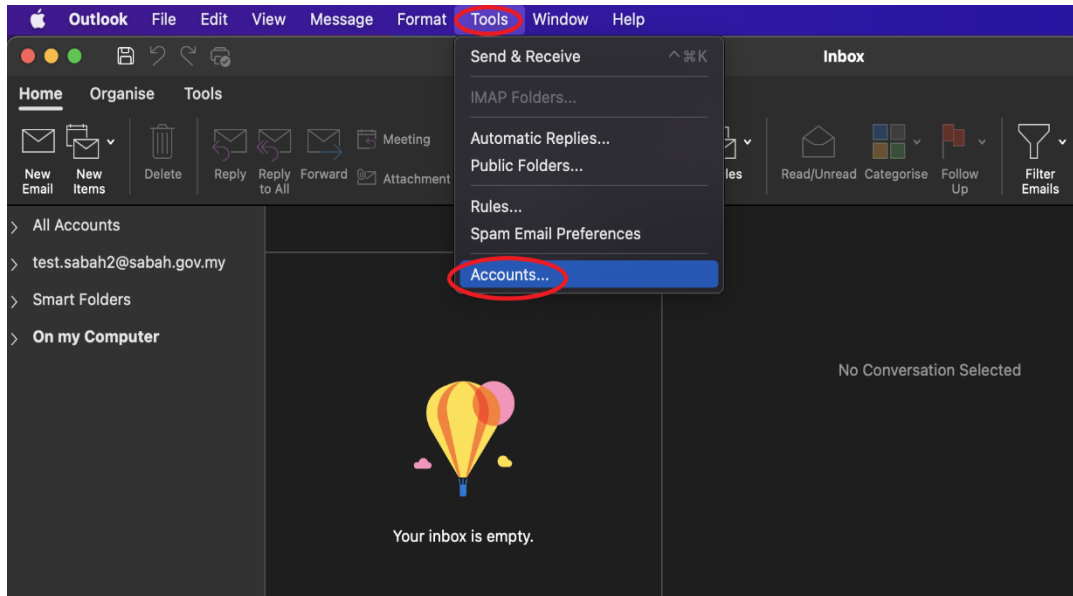


3) Click **Done**. Your Sabah Gov email setup on exchange is complete.

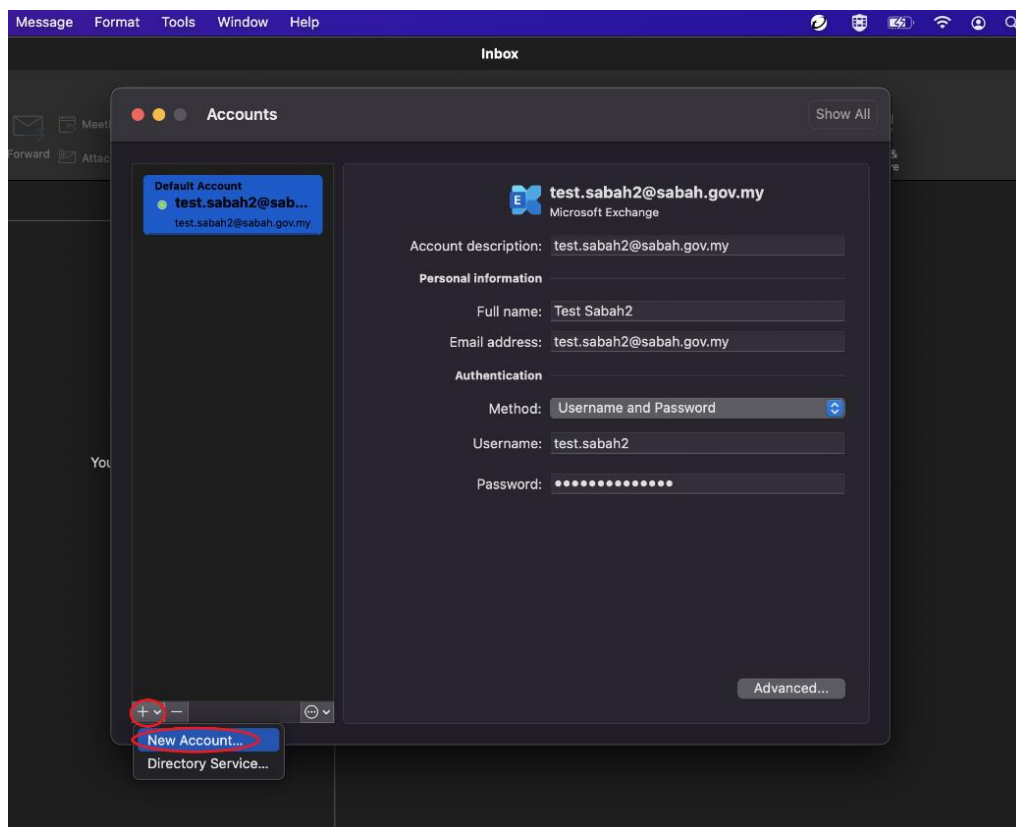


POP3 and IMAP Configuration

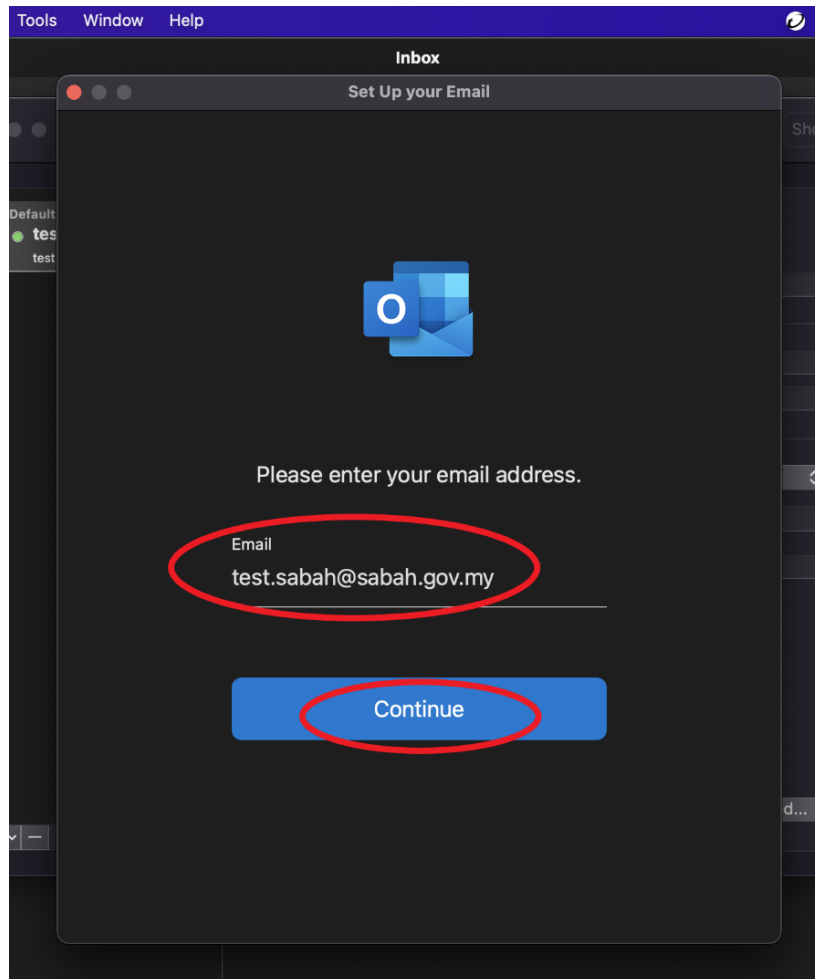
1. Launch Microsoft Outlook on you Mac. Navigate to the menu bar on the top > Click **Tools** > **Accounts**



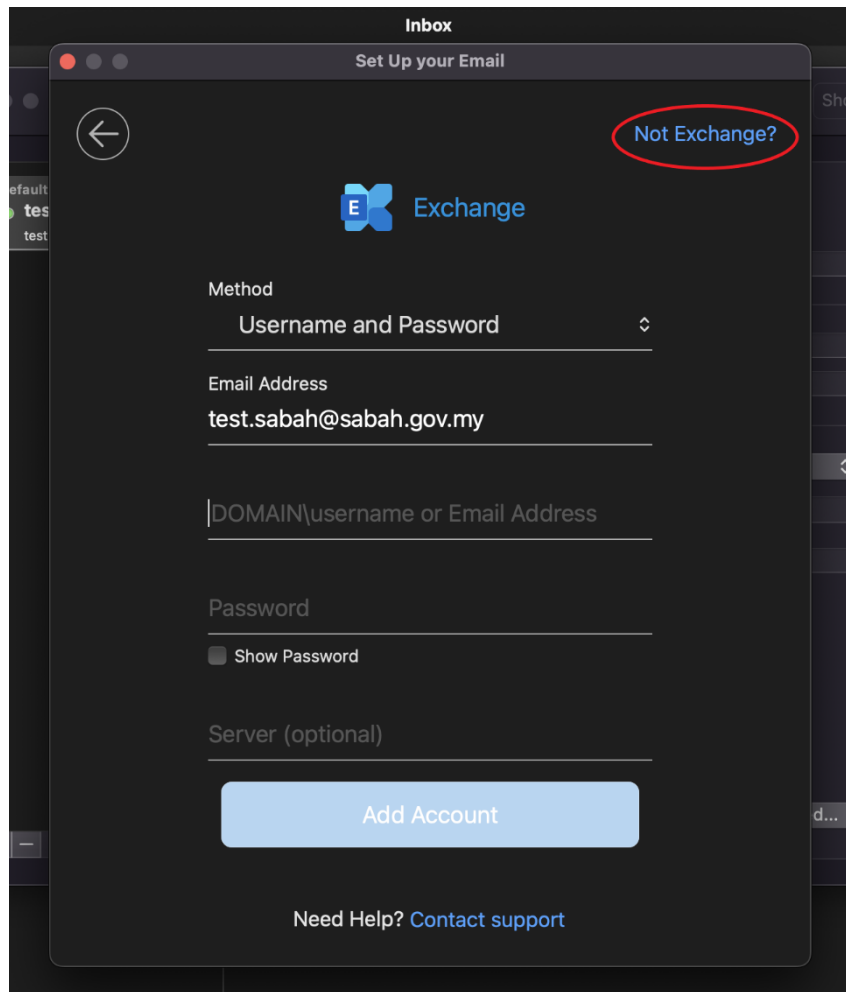
2. In the Accounts window, click the + icon > click **New Account...**



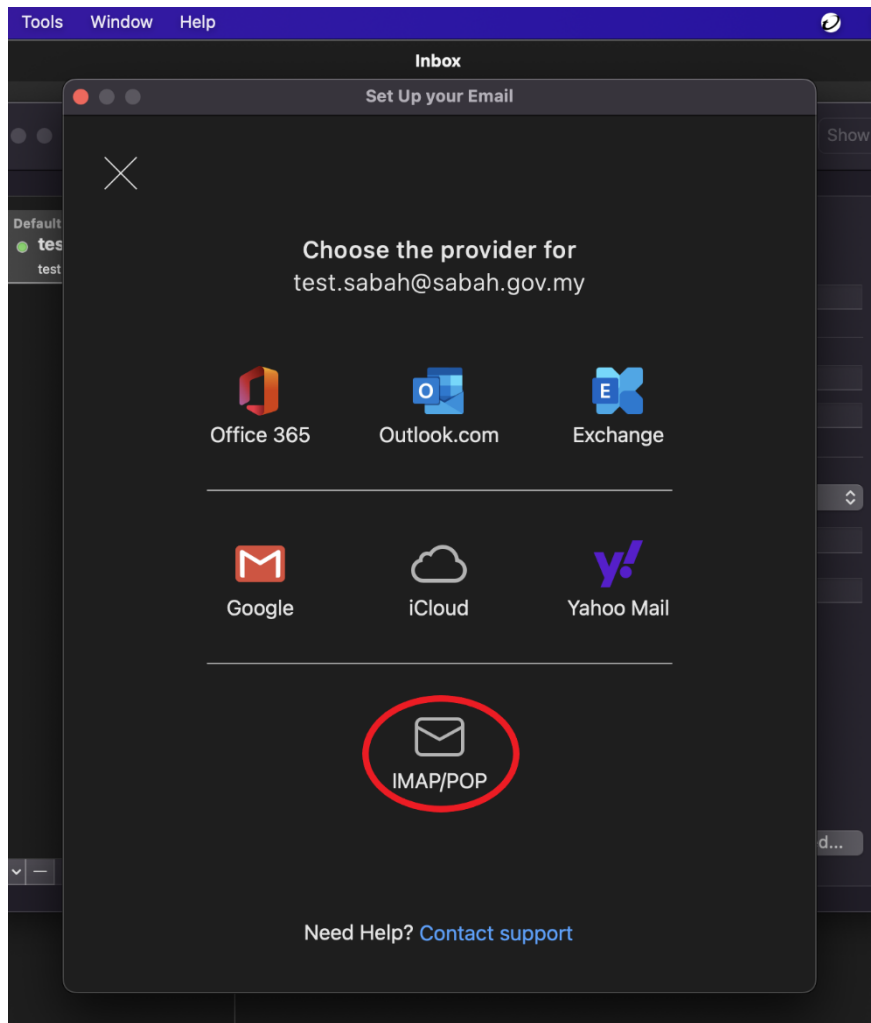
3. On Set up your Email window, type in your Sabah Gov email (eg:Michelle@sabah.gov.my) and click **Continue**.



4. Wait for the window below appear and click **Not Exchange?**



5. Choose **IMAP/POP**



6. At Set Up your Email window, setup your email with these 2 options: **IMAP** or **POP**

For **IMAP**, choose IMAP on the drop-down menu

Enter your Sabah Gov email and password

Incoming Server: mail.sabah.gov.my

tick Use SSL to connect

Select **Port: 143 or 993**

Outgoing Server: **smtp.sabah.gov.my**

Select Port: **25**

For **POP**, choose POP on the drop-down menu

Enter your Sabah Gov email and password

Incoming Server: mail.sabah.gov.my

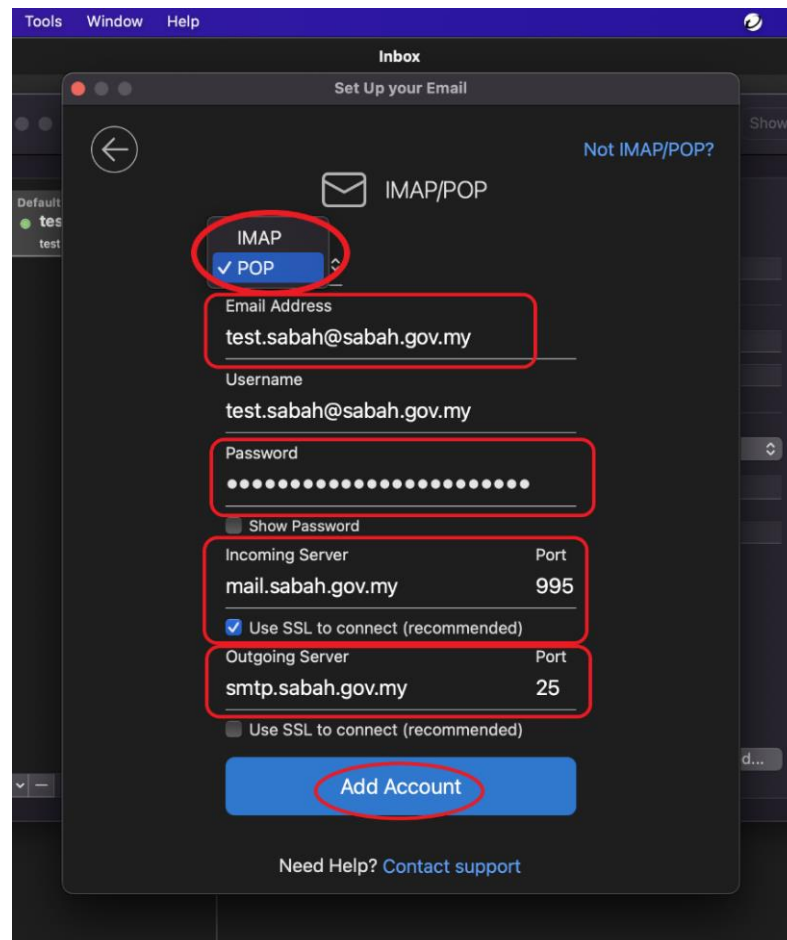
tick Use SSL to connect

Select **Port: 110 or 995**

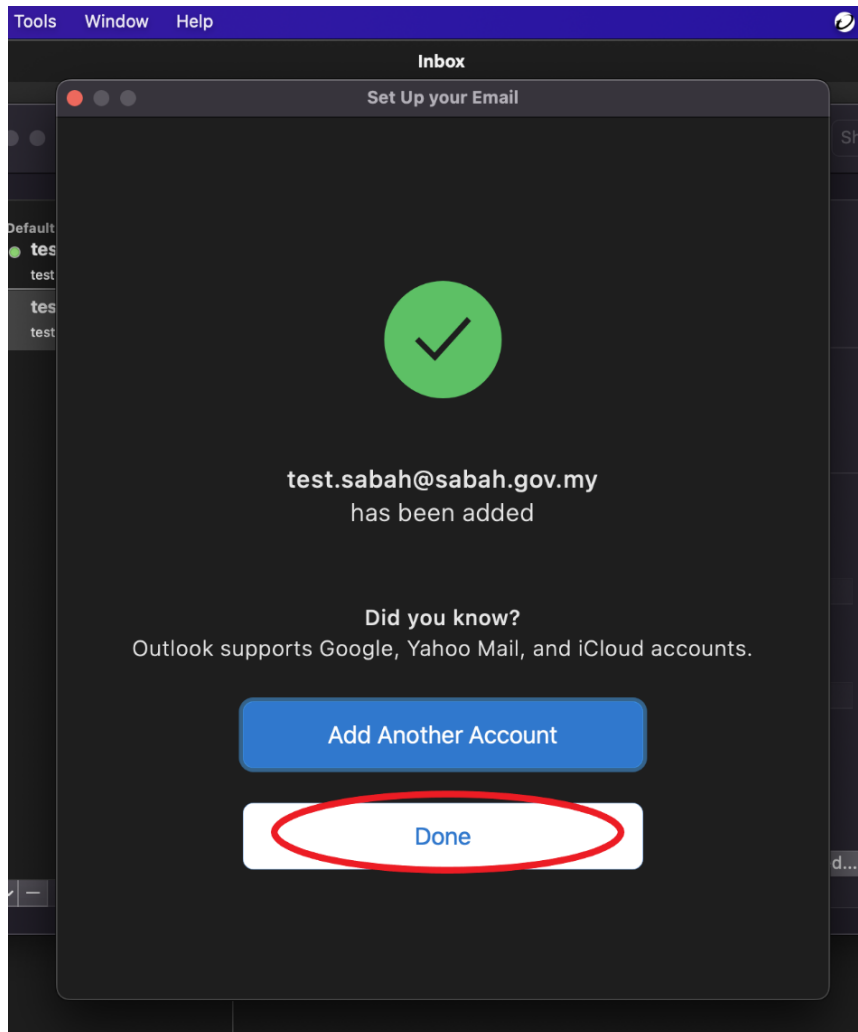
Outgoing Server: **smtp.sabah.gov.my**

Select Port: **25**

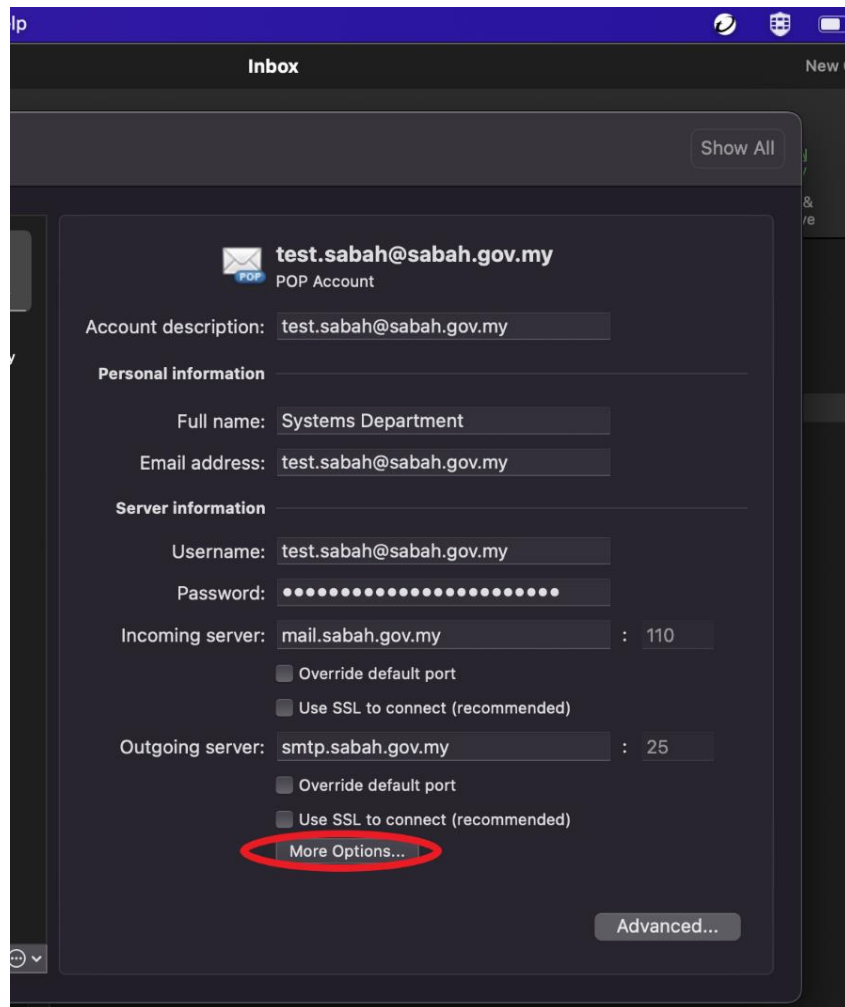
After all is done, click **Add Account**



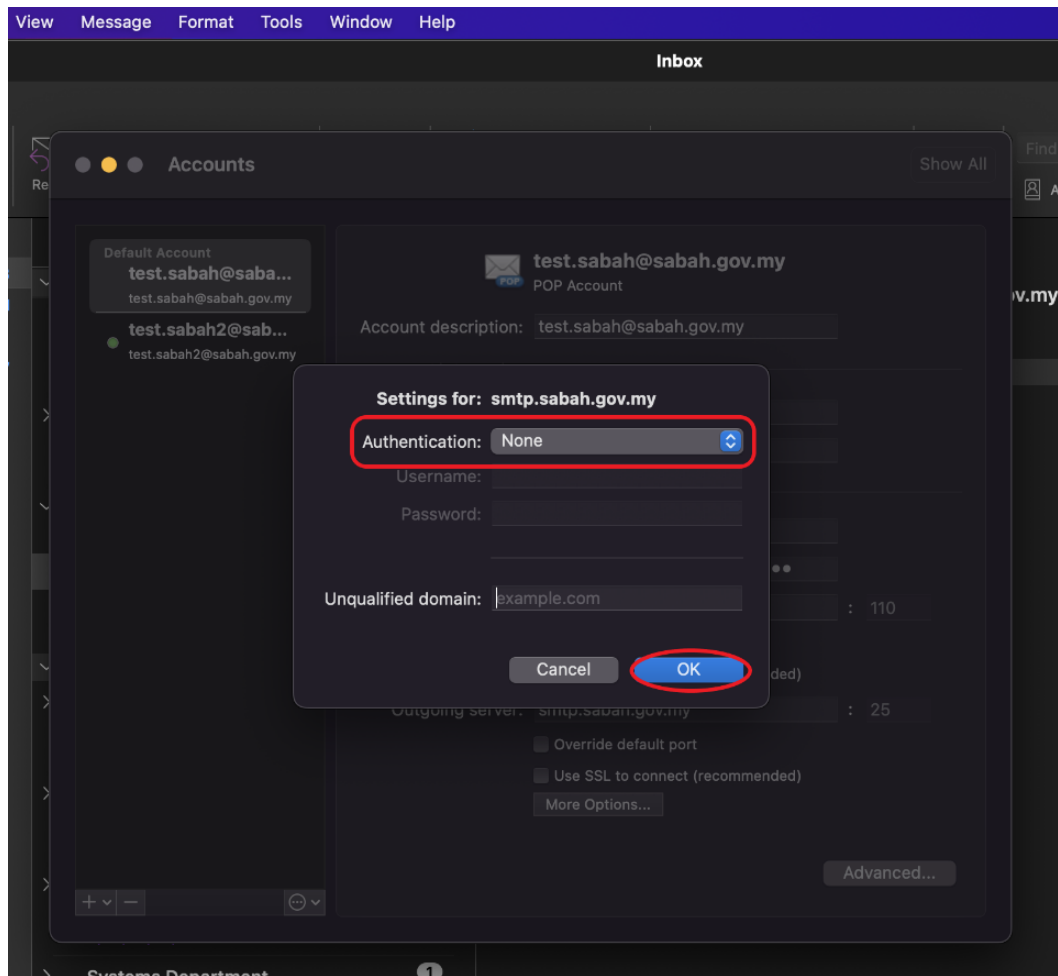
7. Your Sabah Gov email is added, click **Done**



8. After done adding your Sabah Gov email, it will bring you to this configuration page, click **More Options...**

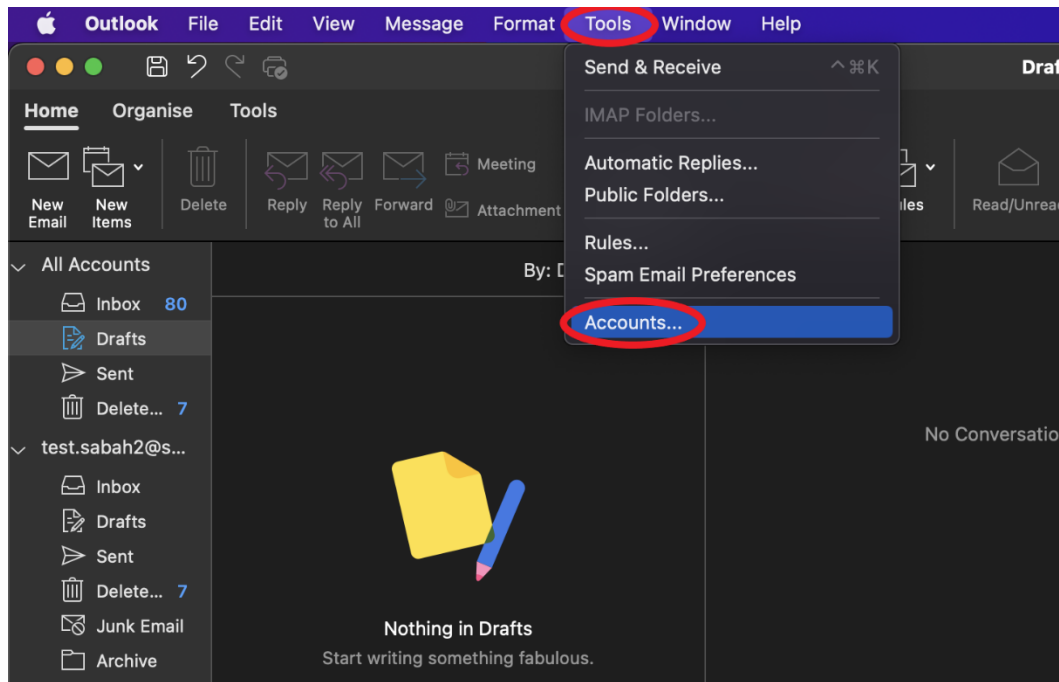


9. Change the Authentication to **None** > click **OK**

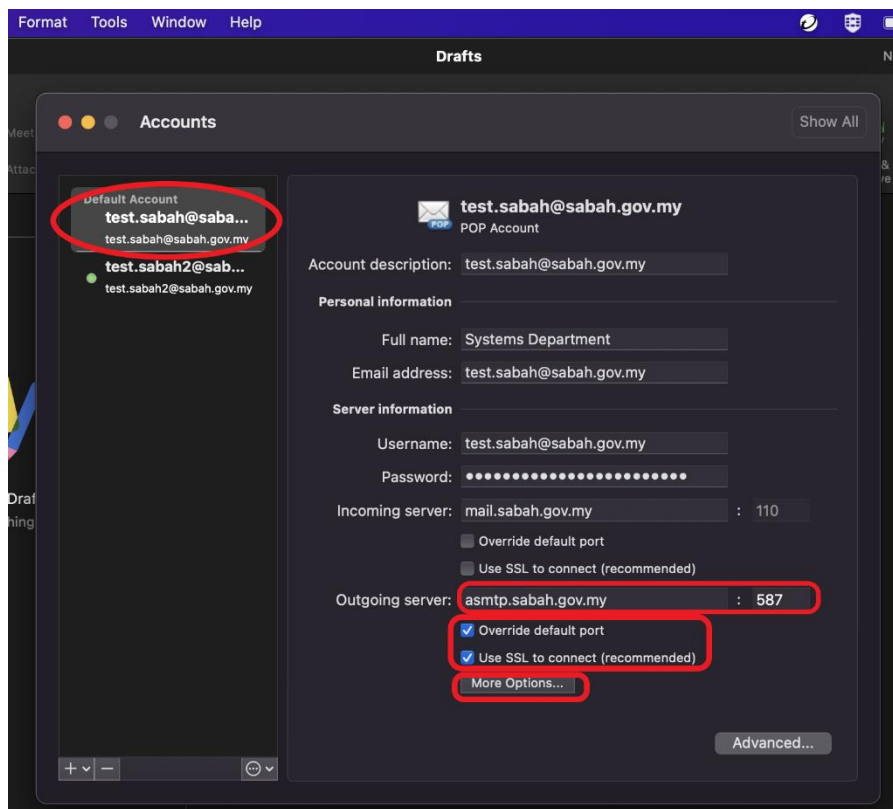


Optional: Configure Authenticated SMTP server (Works on both POP and IMAP)

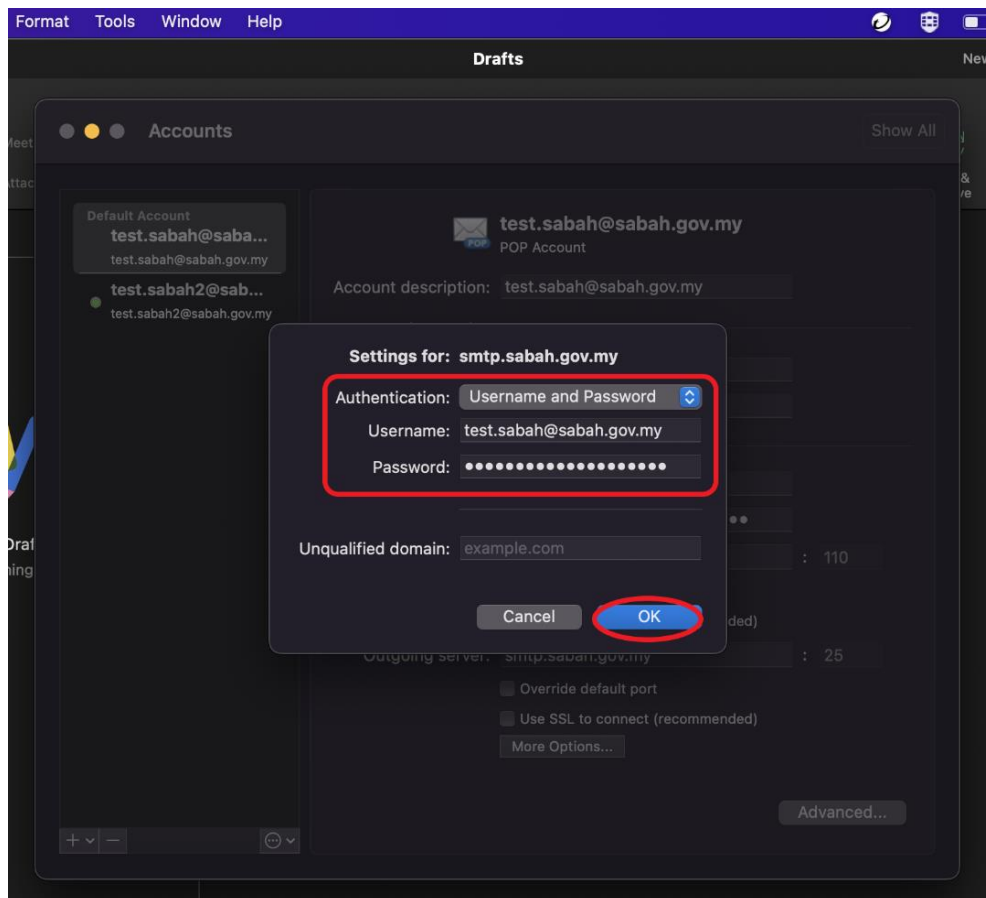
a) From the menu bar, Click **Tools > Accounts...**



b) Select the default account on the left pane, change the outgoing server to **asmtplib.sabah.gov.my** and set the port to **587**. Tick the 2 boxes under the outgoing server. Next, click **More Options...**



- c) Choose **Username and Password** for authentication.
Type in your Sabah Gov email in the username space.
Type in your Sabah Gov email password.
Click **OK** and close the **Accounts** window.



-end-